

WW WoodWick. — crackles as it burns™ —



INDULGE — *your* — **SENSES**

AUTUMN / WINTER 2024

Trade Catalogue

Welcome

Since its beginning WoodWick® has created multi-sensory experiences that add a personal, elegant finish to the home. WoodWick® candles with distinctive wooden wicks, sophisticated fragrances and premium designs, provide a unique experience to indulge the senses.

Our patented wick designs create a beautiful even burn and evoke the soft sounds of a crackling fire. While the trend forward fragrances create an atmosphere that feels tailor made.

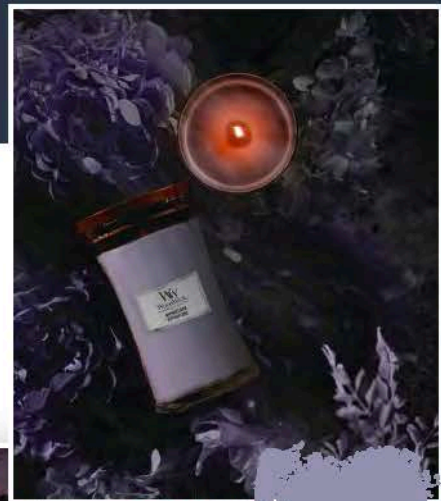
The WoodWick® range provides little moments of luxury and offers a chance to authentically express style in every space.

Read on to discover more about the Autumn / Winter 2024 **NEW** range.

NEW Fragrances

Emerging fragrance trends have inspired the introduction of new seasonal scents, based on key trending ingredient notes such as night-blooming jasmine and dark cherry.

page 06



NEW Autumn / Winter Fragrances *page 06*

NEW



Trilogy *page 18*



ReNew *page 10*



CONTENTS

<i>page 04</i>	The WoodWick® Experience	<i>page 22</i>	Fragrance Families
<i>page 05</i>	Range & Technologies	<i>page 23</i>	Core of your Success
<i>page 06</i>	NEW Autumn / Winter Fragrances	<i>page 24</i>	Fragrance Descriptions
<i>page 10</i>	ReNew Collection	<i>page 26</i>	Visual Merchandising
<i>page 16</i>	Upcycling	<i>page 28</i>	DASH
<i>page 18</i>	Trilogy	<i>page 29</i>	Candle Care
<i>page 20</i>	Gift Sets	<i>page 30</i>	Fragrance Guide



INDULGE — *your* — SENSES

SIGHT



Refined, elegant design

WoodWick® candles feature a clean, contemporary design with refined style and elegant shapes. The flared designs create a wide burn pool for a strong, consistent fragrance experience.

SCENT



Curated, sophisticated fragrance

Every WoodWick® candle features complex fragrances which are carefully selected and tested to help fill the room with nuanced, sophisticated scents.

SOUND



Distinctive crackle

The exclusive wooden wick designs are the result of years of testing and innovation to create the distinctive sound of a crackling fire.

THE RANGE

WoodWick® indulges the senses with stylish products that combine carefully chosen materials and luxury craftsmanship.

Elegant Forms



HOURGLASS CANDLES

Available in Mini, Medium and Large Jars

The iconic hourglass-shaped candles fill your home with a soft crackle and indulgent WoodWick® fragrances. The candles feature a clean, contemporary design with an elegant shape.



ELLIPSE CANDLES

These contemporary ellipse-shaped candles feature the exclusive, Hearthwick® Flame. This creates a distinctive crackle and long dancing flame for a truly multi-sensory experience. These wooden wicks are handcrafted for each candle to produce the optimum wax pool with a fast fragrance release.



RENEW COLLECTION CANDLES

Available in Medium and Large Vessels

Discover WoodWick® ReNew, a consciously created collection.

WOODEN WICK TECHNOLOGIES

+PLUSWICK® INNOVATION



The Pluswick® Innovation features patented wooden wicks that provide a beautiful burn and create the distinctive sounds of a crackling fire.

Featured in the Hourglass Candles & ReNew Collection

HEARTHWICK® FLAME



WoodWick® is the only candle brand that offers Hearthwick® Flame technology. The unique wick creates a soft distinctive crackle and a long dancing flame.

Featured in the Ellipse Candles

NEW

Autumn Winter 2024
FRAGRANCES



Launching JULY 2024

New | **PHANTOM CHERRY**

Deep in the black forest, a dark and sumptuous aroma fills the air with sweetness. A spectral, haunting quality permeates through the trees with scents of dark cherry, amberwood, cashmere, and smoked vanilla.



- TOP**
Dark Cherry, Raspberry, Rhubarb
- MIDDLE**
Amberwood, Moss, Crushed Clove, Tonka Bean
- BASE**
Cashmere, Smoked Vanilla, Creamy Sandalwood, Milk Musk

SIZE	ITEM #
ELLIPSE JAR	1759814E
LARGE JAR	1759807E
MEDIUM JAR	1759812E

New | **HYPNOFLORA**

A rare and mystical white flower, one that only blooms under the light of a full moon, has the power to hypnotize and enchant all who smell its radiant petals. Fall under the spell of its alluring aroma with notes of night-blooming jasmine, pear, and tonka bean.



- TOP**
Pear, Tangerine, Bergamot
- MIDDLE**
Apple Blossom, Neroli, Night-Blooming Jasmine, Moonflower
- BASE**
Tonka Bean, Vanilla, Twilight Amber

SIZE	ITEM #
ELLIPSE JAR	1759810E
LARGE JAR	1759801E
MEDIUM JAR	1759813E

Available in



NEW

Autumn Winter 2024
FRAGRANCES



DAVID
COPPERFIELD

CHARLES
DICKENS

DAVID
COPPERFIELD

CHARLES
DICKENS

Launching JULY 2024

New | ANTIQUARIUM

A historic, gilded-age mansion is more than what it seems: behind a nondescript bookcase, there hides a smoking parlor where a secret society once congregated. Notes of white cardamom, tobacco leaves, and wood paneling help conjure up the scent of that room – and the feeling of discovering a place where mystery and greatness once came to life.



TOP
Cinnamon Bark,
White Cardamom, Ginger

MIDDLE
Orris, Carrot Seed,
Cashmere, Tobacco Leaves

BASE
Amber, Cedarwood, Vanilla
Powder, Wood Paneling

SIZE	ITEM #
ELLIPSE JAR	1759809E
LARGE JAR	1759815E
MEDIUM JAR	1759808E

New | GILDED SANDS

The great pyramids of Egypt, hidden caverns slumbering deep beneath the sand...there's a certain opulence to these arid landscapes and the unexpected treasures they may conceal. Desert air notes blend with the scents of fig and guaiacwood to embody their magnificent mysteries.



TOP
Bergamot, Fig, Peppercorn

MIDDLE
Desert Air, Vetiver, Jasmine

BASE
Guaiacwood, Amber Sands,
Elemi

SIZE	ITEM #
ELLIPSE JAR	1759802E
LARGE JAR	1759811E
MEDIUM JAR	1759804E

Available in



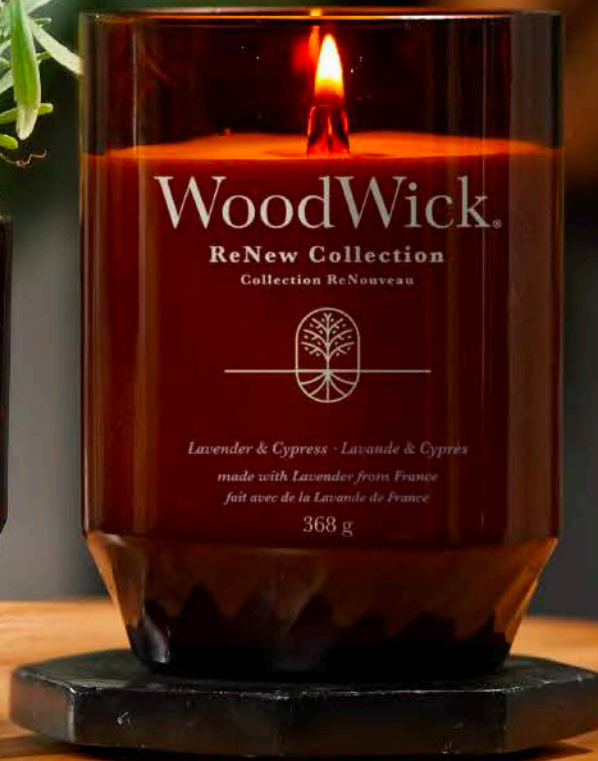
WoodWick.

ReNew Collection



Consciously Created

WoodWick® ReNew fragrances are consciously created to help you make a thoughtful choice that reflects your discerning style. Each fragrance contains bio-based ingredients, including upcycled materials and essential oils. The wooden wick is specially selected for a softer, subtle ambient sound. The plant-based soy coconut wax blend is free of dyes and the vessel is made with 55% recycled glass, making WoodWick® ReNew a thoughtful choice for your sophisticated space.



WoodWick.

ReNew Collection



Plant-based soy coconut wax blend and free of dyes.

Patented PlusWick® Innovation wooden wick that provides a softer, subtle ambient sound.



Amber glass vessels made with 55% post-consumer recycled glass.

Cork lid made from responsibly sourced trees.

Fragrances made with upcycled materials and essential oils.

ReNew Fragrances

The ReNew Collection delivers complex fragrances containing bio-based ingredients

Each candle contains:



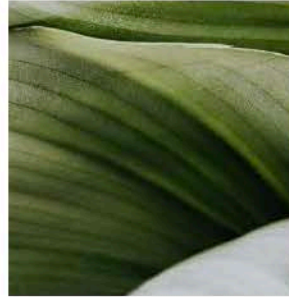
RENEWABLE INGREDIENTS

Bio-based fragrances are made with more than 50% renewable, naturally derived ingredients.



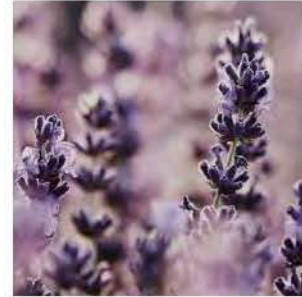
AN UPCYCLED INGREDIENT

Upcycled waste reused into fragrance.



ESSENTIAL OILS

Naturally derived, extracted from plants.



A TRACEABLE INGREDIENT

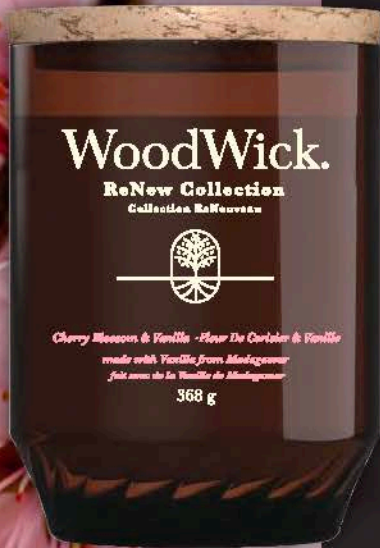
Hero ingredient traceable to the source.





CHERRY BLOSSOM & VANILLA

Drifting scents of cherry blossoms are intertwined with almond, orange, and Madagascar vanilla.



SIZE	ITEM #
MEDIUM CANDLE	1726347E
LARGE CANDLE	1726351E

TOP

Coconut, Peach, Orange, Apple, Red Fruits

MIDDLE

Oat Milk, Lavender, Jasmine, Cherry Blossom, Rose

BASE

Cedarwood, Almond, Tonka Bean, Sandalwood, Amber, Vanilla Essence

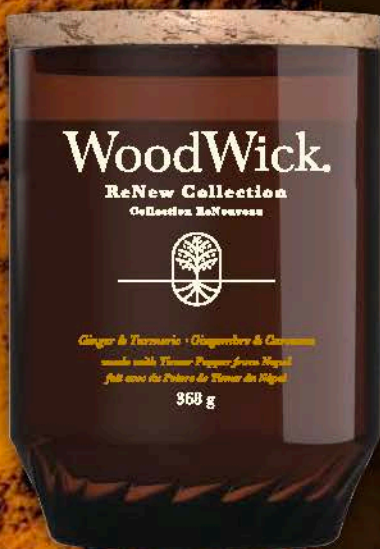


Orange essential oil
made from upcycled Oranges



GINGER & TURMERIC

Notes of spicy ginger and Timur pepper from Nepal get an intriguing twist with turmeric and orange scents.



SIZE	ITEM #
MEDIUM CANDLE	1726349E
LARGE CANDLE	1726348E

TOP

Orange, Lemon, Aniseed, Elemi

MIDDLE

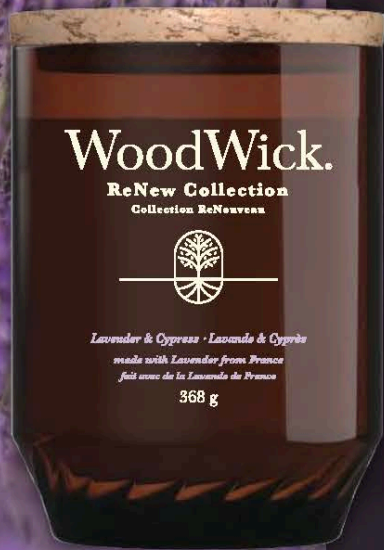
Ginger, Eucalyptus, Cinnamon, Lavender, Turmeric

BASE

Praline, Vanilla, Cedarwood, Caramel



Orange essential oil
made from upcycled Oranges




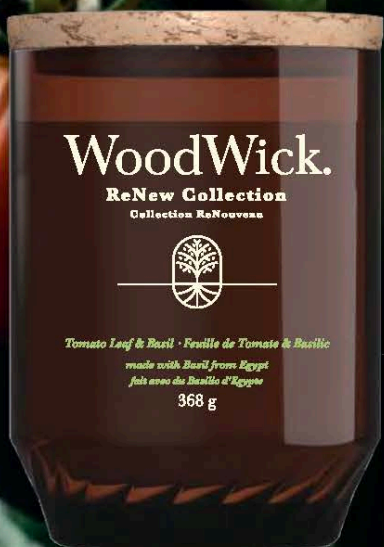
LAVENDER & CYPRESS

Aromatic French lavender is woven with the scents of lemon, cedarwood, and cypress essential oils.

SIZE	ITEM #
MEDIUM CANDLE	1726346E
LARGE CANDLE	1726355E

- TOP**
Lemongrass, Bergamot, Elemi
- MIDDLE**
Lavender, Geranium, Tonka Bean
- BASE**
Cedarwood, Cypress, Fir Balsam

 Cypress essential oil from upcycled tree trimmings



TOMATO LEAF & BASIL

A lush garden with Egyptian Basil and notes of fresh tomato leaf and cloves.

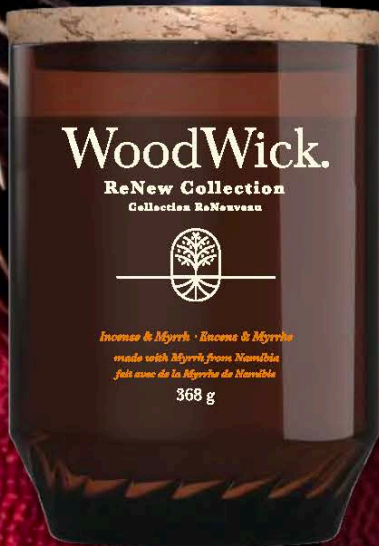
SIZE	ITEM #
MEDIUM CANDLE	1726353E
LARGE CANDLE	1726352E

- TOP**
Purple Basil, Litsea, Sweet Orange
- MIDDLE**
Fresh Sage, Thyme, Gardenia
- BASE**
Rosewood, Crushed Basil, Soft Woods

 Clove Oil made from upcycled Clove leaves

INCENSE & MYRRH

A deep, aromatic blend of myrrh from Namibia, sweet woods, and a touch of orange fragrance.



SIZE	ITEM #
MEDIUM CANDLE	1726344E
LARGE CANDLE	1726350E

TOP
Aniseed, Pine, Coconut, Myrrh, Cardamom

MIDDLE
Lily of the Valley, Violet, Neroli, Rose, Orris

BASE
Sandalwood, Cedarwood, Vanilla, Patchouli, Incense



Orange essential oil
made from upcycled Oranges

BLACK CURRANT & ROSE

Black Currants harvested from France add subtle tartness to classic rose scent and cedarwood essential oil.



SIZE	ITEM #
MEDIUM CANDLE	1726345E
LARGE CANDLE	1726354E

TOP
Lime, Cassis Bud, Pink Pepper

MIDDLE
Rose, Black Currant, Red Berry

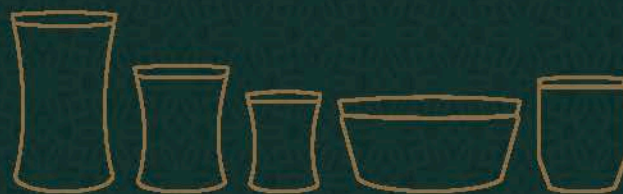
BASE
Cedarwood, Sandalwood

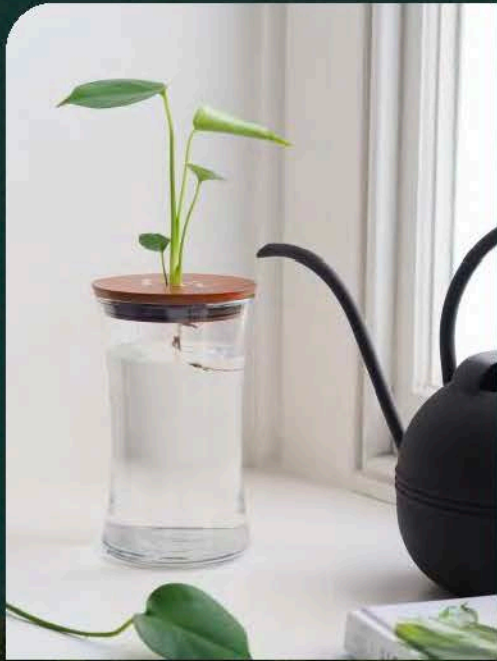


Cedarwood essential oil
made from upcycled Cedarwood

Upcycling

Why not showcase your creativity and passion for upcycling by repurposing your empty WoodWick® candles in to something new? Take your empty candle and turn it in to something for your home or office.





Imagery by @lukearthurwells



TRILOGY

Each candle in this collection offers three distinct fragrances, creating its own unique scent experience as the layers melt together.





BLOOMING ORCHARD

*Yuzu Blooms
Melon & Pink Quartz
Magnolia*

SIZE	ITEM #
MEDIUM JAR	1728626E
LARGE JAR	1728632E
ELLIPSE	1728615E



WARM WOODS

*Fireside
Redwood
Sandalwood Clove*

SIZE	ITEM #
MEDIUM JAR	92911E
LARGE JAR	93911E
ELLIPSE	76911E



SUN-RIPENED BERRIES

*Currant
Spiced Blackberry
Black Cherry*

SIZE	ITEM #
MEDIUM JAR	92972E
LARGE JAR	93972E
ELLIPSE	76972E



CALMING RETREAT

*Lavender Spa
Sea Salt & Cotton
White Tea & Jasmine*

SIZE	ITEM #
MEDIUM JAR	92965E
LARGE JAR	93965E
ELLIPSE	76965E



EVENING LUXE

*Hinoki Dahlia
Lavender Spa
White Teak*

SIZE	ITEM #
MEDIUM JAR	1743627E
LARGE JAR	1743629E
ELLIPSE	1743624E



CAFÉ SWEETS

*Vanilla Bean
Caramel
Biscotti*

SIZE	ITEM #
MEDIUM JAR	92904E
LARGE JAR	93904E
ELLIPSE	76904E



AMETHYST SKY

*Amethyst & Amber
Suede & Sandalwood
Smoked Jasmine*

SIZE	ITEM #
MEDIUM JAR	1707527E
LARGE JAR	1707526E
ELLIPSE	1707525E

Gift Sets

WoodWick® provides an elegant gift option for any occasion.

A distinctive pattern, satin ribbons and foil embellishments create a sophisticated aesthetic and hint at the premium experience found inside.

Inside discover carefully curated fragrance pairings.

With woody and floral offerings, our top-selling fragrances are featured in these sets. Your discerning customers are sure to find a set that's just the right fit for their gifting needs.



EVERYDAY GIFT SETS



ITEM #

Medium Hourglass Gift Set

1699065E

- 1 x Fireside Medium Hourglass Candle
- 1 x Linen Medium Hourglass Candle



ITEM #

Ellipse Gift Sets

1699070E

- 1 x Fireside Ellipse Candle



ITEM #

3 Mini Hourglass Woody Gift Set

1741952E

- 1 x Fireside Mini Hourglass Candle
- 1 x White Teak Mini Hourglass Candle
- 1 x Sand & Driftwood Mini Hourglass Candle

3 Mini Hourglass Floral Gift Set

1727429E

- 1 x Evening Onyx Mini Hourglass Candle
- 1 x Solar Ylang Mini Hourglass Candle
- 1 x Coastal Sunset Mini Hourglass Candle

Discover the WOODWICK® FRAGRANCE FAMILIES

WoodWick® candles are available in a beautiful range of indulgent, complex and sophisticated scents. WoodWick® fragrances help our consumers establish signature scents, to express their unique style.

In order to accommodate, our fragrances extend across the whole ranges of olfaction and fit within six fragrance families.



FRUITY & CITRUS

Deep and vibrant notes of fruit combined with sharp citrus, these fragrances are refreshing and optimistic.



FRESH & CLEAN

Crisp, pure, and airy; these fragrances provide a space to relax and breathe.



FLORAL

Dreamy, lush, and romantic; these fragrances are enchanting and captivating.



GOURMAND

Sweet, satisfying, and delectable; these fragrances appeal to the refined palate.



AMBERY

Warm, indulgent, and rich; these fragrances are sophisticated and rare.



WOODY

Earthy, smoky, and authentic; these fragrances are grounding and iconic.

CORE *of your* SUCCESS

This selection draws on sales data and olfactive balance to create a range that perfectly captures consumer favourites and quintessential WoodWick® fragrances.



WHITE TEAK



FIRESIDE



LAVENDER & CEDAR



VANILLA & SEA SALT



SANTAL MYRRH



HINOKI DAHLIA



CASHMERE



WHITE TEA &
JASMINE



LINEN



BLACK CHERRY

Festive Fragrances



CINNAMON CHAI



EVERGREEN CASHMERE

FRAGRANCE *Descriptions*



White Teak

A nuanced blend of aromas: crisp balsam branches mixed with sandalwood, and oak with hints of moss-of-tree and cedarwood.



White Tea & Jasmine

Notes of pure white tea with a hint of jasmine gently blended with scents of red cedar and rose.



White Honey

Scents of sweet candied orange blossom with cascading vanilla orchid and roasted toffee.



Linen

The fresh scent of crisp, clean linen drying in a warm summer breeze.



Island Coconut

Lush scents of juicy pineapple blended with creamy coconut create the perfect tropical treat.



Solar Ylang

Scents of fresh bergamot arranged in a sweet white bouquet of jasmine, tuberose and ylang-ylang. Ending with musk and creamy sandalwood notes.



Warm Wool

Dreamy scents of warm wool and wild flowers for the perfect finishing touch in any room.



Vanilla Bean

Indulge in the rich, sumptuous scent of vanilla bean.



Cashmere

An unexpected combination of fragrance notes – including sandalwood, tonka bean, and quince – blend to create a sumptuous, compelling scent.



Fireside

Our signature fragrance balances the rich scents of amber, vetiver and musk to perfectly capture the essence of a perfect evening by a warm fire.



Sand & Driftwood

A perfectly balanced fragrance: notes of sun-washed wood, sea grass, and soft white sand.



Santal Myrrh

A sweet and woody incense-like fragrance composed of mahogany, lemon, and golden amber notes.



NEW Gilded Sands

Desert air notes blend with the scents of fig and guaiacwood to embody magnificent mysteries.



Seaside Mimosa

A blend of juicy citrus and sparkling wine notes make this scent as refreshing as a cold drink on a summer shore.



Manuka Nectar

A nuanced, fruit-forward scent experience with fresh peach, honeycomb, warm vanilla, and soft floral notes.



Crimson Berries

Aromas of juicy Christmas berries blended with a touch of warm spice and mistletoe essence.



Pomegranate

Crisp, complex pomegranate notes with cassis, soft florals, and rich undertones of rum and musk.



Cinnamon Chai

Relish the warm, intoxicating aroma of spicy cinnamon and rich vanilla notes.



NEW Phantom Cherry

A spectral, haunting quality permeates through the trees with scents of dark cherry, amberwood, cashmere, and smoked vanilla.

DISCOVER OUR COMPLETE ASSORTMENT OF REFINED FRAGRANCES



Black Cherry

The indulgent sweet scents of juicy, ripe black cherries.



Spiced Blackberry

Delightfully rich blackberry and cinnamon filling inside a flaky, vanilla-drizzled Danish.



Wild Berry & Beets

Aromas of wild berries and rich beets infused with oak, orange and orris scents.



Pressed Blooms & Patchouli

Delicate floral scents bloom on a bed of woody vetiver and patchouli aromas.



Coastal Sunset

Experience the warm glow of the coast with nuanced scents of sun-kissed blossoms, creamy coconut, and salty ocean air.



Rosewood

Roseberry and soothing tea accords unite with notes of cedarwood and musk.



Vanilla & Sea Salt

The scent of soft vanilla blossoms swirled with notes of sea salt and jasmine.



Lavender Spa

Recreate a day at the spa with the relaxing scents of specially blended lavender and eucalyptus essential oils.



NEW Hypnoflora

Fall under the spell of this alluring aroma with notes of night-blooming jasmine, pear, and tonka bean.



Hinoki Dahlia

An intricate fragrance highlighting notes of hinoki wood, velvet plum, and midnight dahlia.



NEW Antiquarium

Notes of white cardamon, tobacco leaves, and wood paneling help conjure the feeling of discovering a place where mystery and greatness once came to life.



Lavender & Cedar

Pink pepper and aromatic lavender are layered with notes of sage flower, patchouli, and blonde woods.



Sagewood & Seagrass

An airy yet complex combination of crisp citrus, ocean minerals, and white sage notes.



Evergreen Cashmere

Bright pinyon pine and fresh air accords are tempered with warm cashmere, spice, and sandalwood.



Tempest

Sea spray sparkles in a fragrance blend swirling with notes of mineral woods, waterlily, and pearl crystals.



Evening Onyx

This deep fragrance palette of jasmine leaf, black orchid, and sandalwood is a mysterious treat for the senses.



Mint Leaves & Oak

The scent of fresh mint leaves brighten a woody blend of green moss, smoked oak, and cypress.



Fraser Fir

Aromatic notes are expertly combined to create the essence of fresh-cut fir on a crisp winter morning.



* Selected fragrances only.
Details on page 30.

VISUAL MERCHANDISING

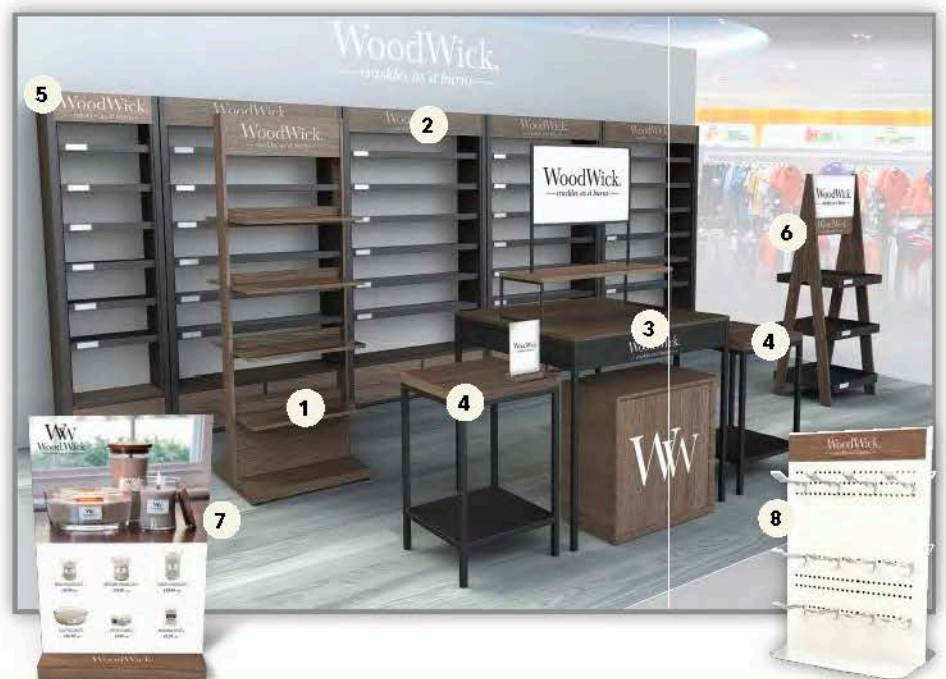
Visual Merchandising is about presenting your products in the most attractive way to engage and motivate the consumer towards making a purchase. This is done by creating displays that accentuate a product's appearance, features, benefits, and uses in a visually compelling way and presenting them in a way that drives tangible increases in revenue.

STORE DESIGN

Store design, furniture, lighting, cleanliness and product layout, all play an important part in creating a great environment to engage the consumer, giving them a reason to shop, browse and make a purchase.

Whether you're creating a small, medium, or large shop floor layout, WoodWick® can offer you branded furniture and recommend what products to display to increase consumer interaction and optimise sales results.

FURNITURE DESCRIPTION	
1	WS WW 2ft Fixture
2	WS WW Double Wall Bay Kit
3	WS WW Nesting Table Set
4	WS WW Side Table
5	WS WW Single Wall Bay Kit
6	WS WW Ladder
7	WW A4 Poster Frame
8	WS Multi Brand CDU



SUPPORT TOOLS

From furniture, to visual merchandising guides and signage; we have everything you need.

We provide visual merchandising guides and planogram templates to improve product presentation and commerciality within your store. This includes an overview of product, displays and signage.

We can highlight you as an official WoodWick® stockist using a self-cling window decal.

For more information, these can be downloaded from DASH or from your customer care representative.

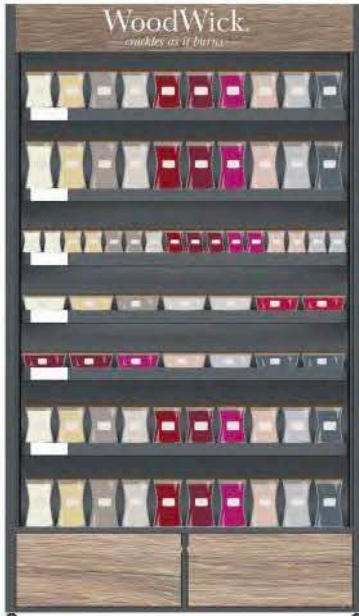


RECOMMENDED WALL BAY FRAGRANCE ASSORTMENTS

WoodWick® can provide recommended fragrance and form assortments to ensure your store carries the most seasonally appropriate products. Our recommended assortments are based on understanding fragrance sales, market trends and consumer buying behaviour.

OPTION 1 | DOUBLE WALL BAY

• 10 Core Fragrances



(Large, Medium, and Ellipse)

- 1 Linen
- 2 Vanilla Bean
- 3 Fireside
- 4 Warm Wool
- 5 Cinnamon Chai
- 6 Black Cherry
- 7 Wild Berry & Beets
- 8 Vanilla & Sea Salt
- 9 Lavender & Cedar
- 10 Evening Onyx

OPTION 1 | SINGLE WALL BAY

• 10 Core Fragrances



(Large, Medium, and Ellipse)

- 1 Linen
- 2 Vanilla Bean
- 3 Fireside
- 4 Warm Wool
- 5 Cinnamon Chai
- 6 Black Cherry
- 7 Wild Berry & Beets
- 8 Vanilla & Sea Salt
- 9 Lavender & Cedar
- 10 Evening Onyx

OPTION 2 | DOUBLE WALL BAY

- 15 Core Fragrances (Large, Medium, and Ellipse)
- 3 Trilogy Fragrances (Large, Medium, and Ellipse)



- 1 White Teak
- 2 Vanilla Bean
- 3 Fireside
- 4 Warm Wool
- 5 **NEW** Gilded Sands
- 6 Crimson Berries
- 7 Cinnamon Chai
- 8 **NEW** Phantom Cherry
- 9 Black cherry
- 10 Wild Berry & Beets
- 11 **NEW** Antiquarium
- 12 **NEW** Hypnoflora
- 13 Hinoki Dahlia
- 14 Lavender & Cedar
- 15 Evening Onyx
- 16 Trilogy - Calming Retreat
- 17 Trilogy - Evening Luxe
- 18 Trilogy - Café Sweets

OPTION 2 | SINGLE WALL BAY

- 5 Core Fragrances (Large, Medium, and Ellipse)
- 2 Trilogy Fragrances (Large, Medium, and Ellipse)



- 1 White Teak
- 2 Fireside
- 3 Cinnamon Chai
- 4 Black Cherry
- 5 Evening Onyx
- 6 Trilogy - Calming Retreat
- 7 Trilogy - Café Sweets

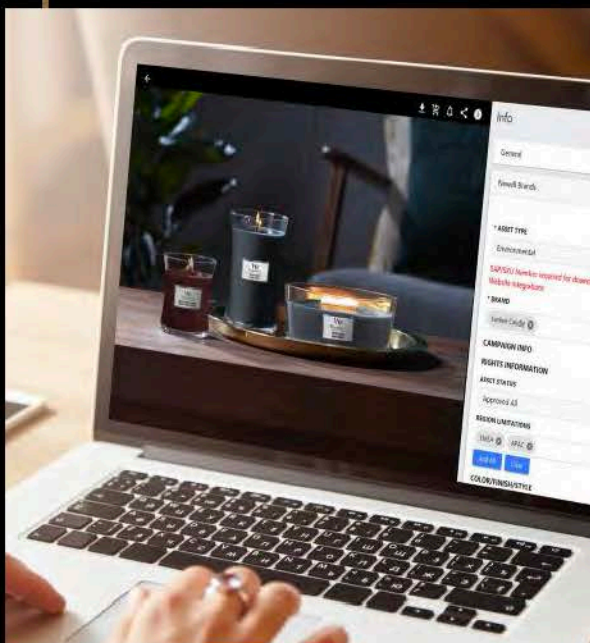
Discover DASH

OUR DIGITAL ASSET STORAGE HOUSE

A free resource for approved marketing materials exclusively for our wholesale customers.

Find everything you need to advertise and promote your WoodWick® products, right at your fingertips, 24/7.

IT'S FAST,
EASY &
FREE



Visit **DASH** for dozens of branded and approved materials for all your marketing needs including:

Logos, POS, Order Forms, Product Images, Catalogues and more.

NEW USERS
Please consult with your sales representatives for registration instructions.
dash.newellbrands.com

CANDLE CARE TIPS

WoodWick® candles can occasionally display different burning characteristics than other candles.

Here are a few simple steps to enjoy the best burn every time.

1

ALLOW WAX TO POOL

You will experience the best burn results when the candle remains lit for 3-4 hours. For the Ellipse candles with Hearthwick® Flame, light the wick on one end and allow the flame to flow naturally across the wick.

Make sure that the wax melts to the edge of the candle before extinguishing it - this may take between 30 to 60 minutes. Allowing the wax to pool will discourage 'tunnelling' or leaving wax on the sides of the vessel.

The flame height may vary at times and occasionally even appear to self-extinguish, but this is normal. Even if you are experiencing a 'low' flame, it will continue to heat and the flame height should return.

2

KEEP THE CANDLE WITHIN SIGHT AND AWAY FROM DRAFTS

Always place the candle on a flat, heat-resistant surface, and make sure to keep the candle away from children, pets, flammable materials and other heat sources.

3

NEVER MOVE OR HANDLE THE CANDLE WHILE IT'S BURNING OR WHILE THE WAX IS HOT

To be safe, only move your candle once the flame is extinguished and the wax has completely cooled.

4

KNOW WHEN TO 'TRIM' THE WICK

For the Hourglass candles, the wick should be trimmed to 6mm before each use. Due to the nature of the Ellipse candles, you should not need to trim the wick. The only exception is when the flame exceeds 25mm or the candle begins to smoke.

If you need to trim the wick, carefully extinguish the candle, allow the wick and wax to cool and trim the wick to 6mm by gently breaking off the burned edges with a cloth or paper napkin. Safely remove and discard all wick trimmings and debris before relighting the candle.

5

KNOW WHEN TO SAY GOODBYE

When there is approximately 6mm of wax remaining, it is time to stop using your candle. Extinguish the candle when 6mm of wax remains and recycle it according to your local recycling centre's guidance.

FRAGRANCE GUIDE



MINI JAR
PLUSWICK® INNOVATION

H: 83mm
W: 70mm
D: 70mm



MEDIUM JAR
PLUSWICK® INNOVATION

H: 114mm
W: 99mm
D: 99mm



LARGE JAR
PLUSWICK® INNOVATION

H: 178mm
W: 102mm
D: 102mm



ELLIPSE JAR
HEARTHWICK® FLAME

H: 92mm
W: 121mm
D: 191mm

	MINI JAR PLUSWICK® INNOVATION	MEDIUM JAR PLUSWICK® INNOVATION	LARGE JAR PLUSWICK® INNOVATION	ELLIPSE JAR HEARTHWICK® FLAME
NEW ANTIQUARIUM	x	1759808E	1759815E	1759809E
BLACK CHERRY	98100E	92100E	93100E	76100E
CASHMERE	1720916E	1720908E	1720903E	1720918E
CINNAMON CHAI	98104E	92104E	93104E	76104E
COASTAL SUNSET	98049E	92049E	93049E	76049E
CRIMSON BERRIES	98080E	92080E	93080E	76080E
EVENING ONYX	x	1725480E	1725428E	1725479E
EVERGREEN CASHMERE	1743623E	1743602E	1743614E	1743617E
FIRESIDE	98106E	92106E	93106E	76106E
FRASER FIR	x	92175E	93175E	76175E
NEW GILDED SANDS	x	1759804E	1759811E	1759802E
HINOKI DAHLIA	1743621E	1743618E	1743611E	1743608E
NEW HYPNOFLORA	x	1759813E	1759801E	1759810E
ISLAND COCONUT	98115E	92115E	93115E	76115E
LAVENDER & CEDAR	1666278E	1666266E	1666272E	1666260E
LAVENDER SPA	x	92492E	93492E	76492E
LINEN	98135E	92135E	93135E	76135E
MANUKA NECTAR	x	1753959E	1753976E	1753971E
MINT LEAVES & OAK	1721690E	1721697E	1721687E	1721696E
NEW PHANTOM CHERRY	x	1759812E	1759807E	1759814E
POMEGRANATE	x	1725475E	1725417E	1725429E
PRESSED BLOOMS & PATCHOULI	x	1632428E	1632431E	1632429E
ROSEWOOD	98025E	92025E	93025E	76025E
SAGEWOOD & SEAGRASS	1728621E	1728613E	1728619E	1728630E
SAND & DRIFTWOOD	x	92378E	93378E	76378E



	MINI JAR PLUSWICK® INNOVATION	MEDIUM JAR PLUSWICK® INNOVATION	LARGE JAR PLUSWICK® INNOVATION	ELLIPSE JAR HEARTHWICK® FLAME
	H: 83mm W: 70mm D: 70mm	H: 114mm W: 99mm D: 99mm	H: 178mm W: 102mm D: 102mm	H: 92mm W: 121mm D: 191mm
SANTAL MYRRH	1743620E	1743603E	1743619E	1743609E
SEASIDE MIMOSA	x	92085E	93085E	76085E
SOLAR YLANG	x	1647919E	1647925E	1647909E
SPICED BLACKBERRY	x	92078E	93078E	76078E
TEMPEST	x	1753975E	1753972E	1753974E
VANILLA BEAN	98112E	92112E	93112E	76112E
VANILLA & SEA SALT	98191E	92191E	93191E	76191E
WARM WOOL	1725410E	1725452E	1725423E	1725446E
WHITE HONEY	98026E	92026E	93026E	76026E
WHITE TEA & JASMINE	98062E	92062E	93062E	76062E
WHITETEAK	98039E	92039E	93039E	76039E
WILD BERRY & BEETS	1632284E	1632270E	1632276E	1632290E



RENEW LARGE JAR
PLUSWICK® INNOVATION

H: 129.5mm
W: 88mm
D: 88mm



RENEW MEDIUM JAR
PLUSWICK® INNOVATION

H: 96mm
W: 80mm
D: 80mm

BLACK CURRANT & ROSE	1726354E	1726345E
CHERRY BLOSSOM & VANILLA	1726351E	1726347E
GINGER & TURMERIC	1726348E	1726349E
INCENSE & MYRRH	1726350E	1726344E
LAVENDER & CYPRESS	1726355E	1726346E
TOMATO LEAF & BASIL	1726352E	1726353E



© 2024 Newell Brands. All rights reserved. Entire text, photographs and packaging are copyrighted subject matter belonging to Newell Brands. No portion may be reproduced without prior written approval.

WW
WoodWick.
—crackles as it burns—

WW AW24 CATALOGUE UK
2642706



5 038581 164151

Yankee Candle Company (Europe) Limited,
Poplar Way East, Cabot Park, Avonmouth, Bristol, BS11 0YH, United Kingdom
Yankee Candle s.r.o.,

Průmyslová zóna Joseph, Havraň u Mostu, 435 01, Czech Republic | Tel: 008 008 658 8466
Tel: +44 (0)117 316 1200 Fax: +44 (0)117 316 1400 | Email: HFCustomerCare@Newellco.com | www.woodwick.co.uk
A Subsidiary of Newell Brands